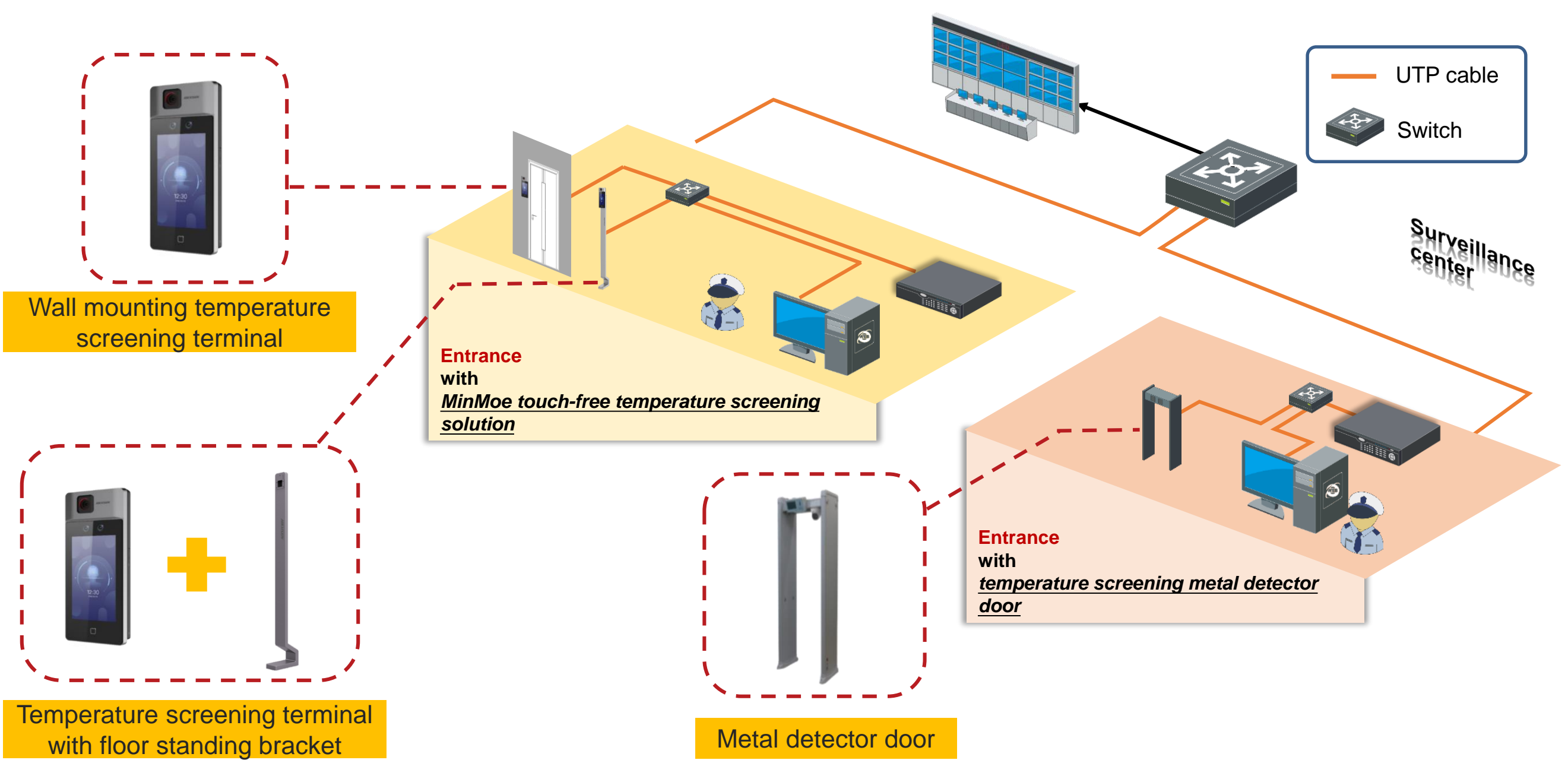




MinMoe Access Control & Metal Detector Door Temperature Screening Solutions

Human skin-surface temperature is an important indicator of physical health. In many scenarios, abnormal temperatures need to be detected quickly and accurately in order to take measures to prevent a situation from becoming dangerous. Hikvision's access control & temperature screening solution is designed to achieve rapid preliminary screening with high efficiency.

Topology



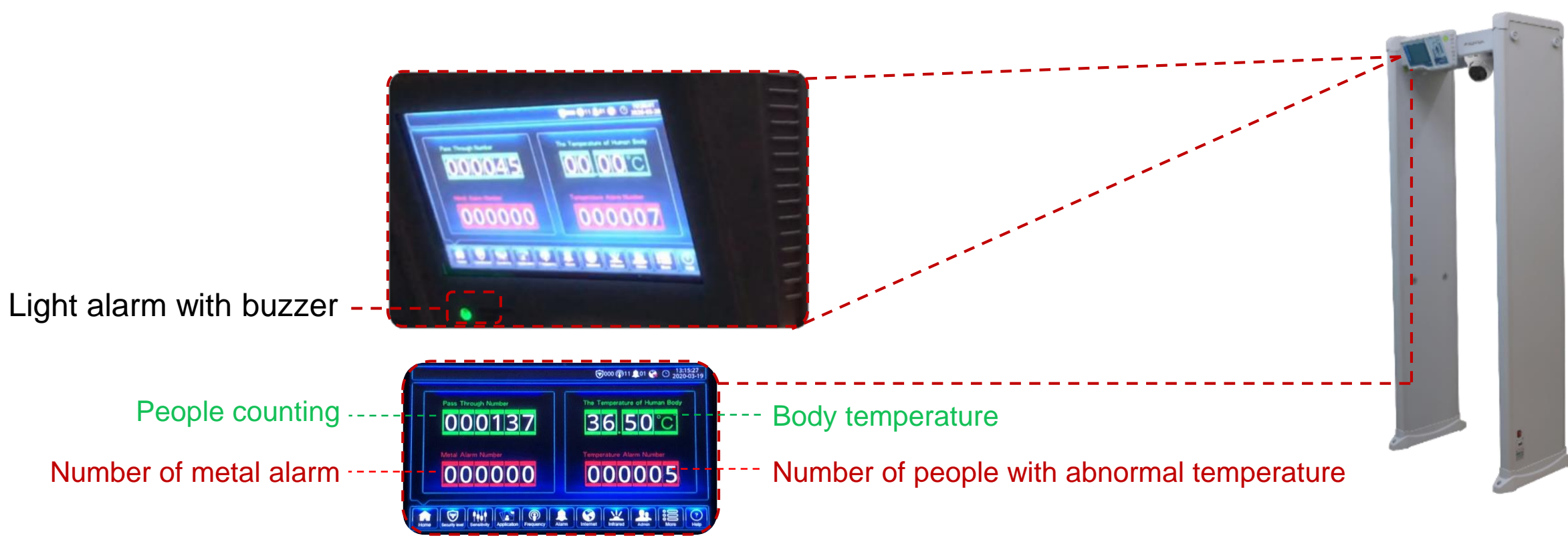
MinMoe Touch-free Temperature Screening Solutions



- Live view
- Displays temperature results
- Voice reminder

Temperature Screening Metal Detector Door Solution

01 Real-time people counting and temperature display

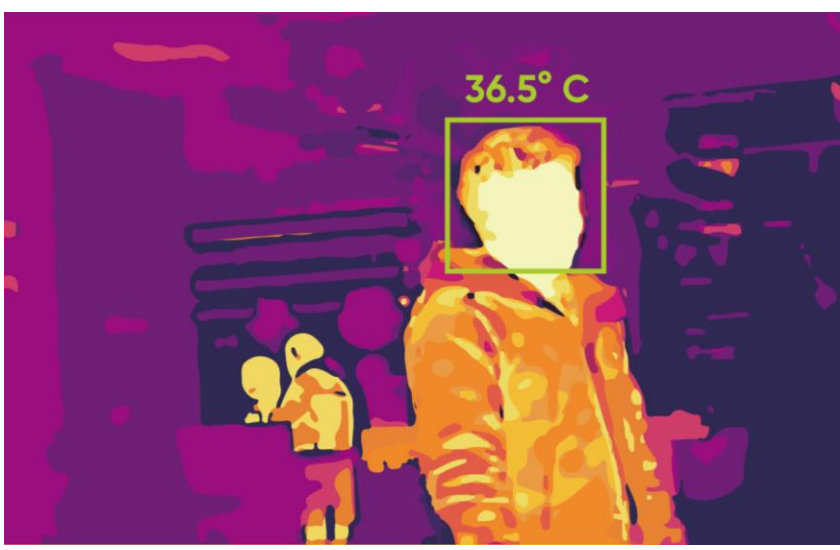


02 Metal detection alarm and temperature detection alarm



Thermographic Technology

Thermal technology converts IR radiation into grayscale values, and then matches grayscale values to temperature values through the built-in algorithm.

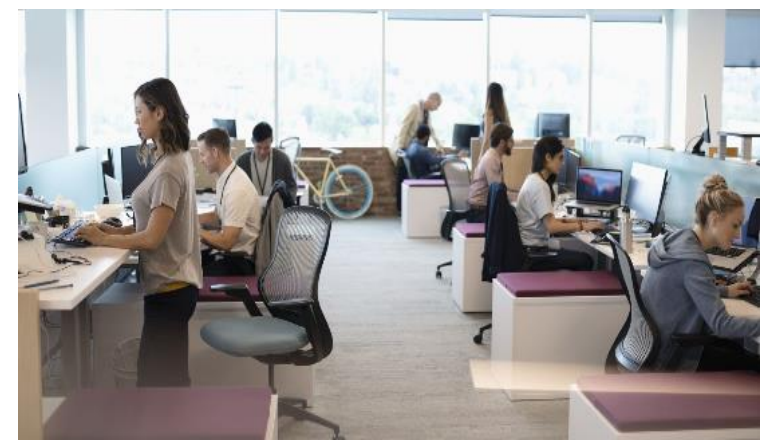
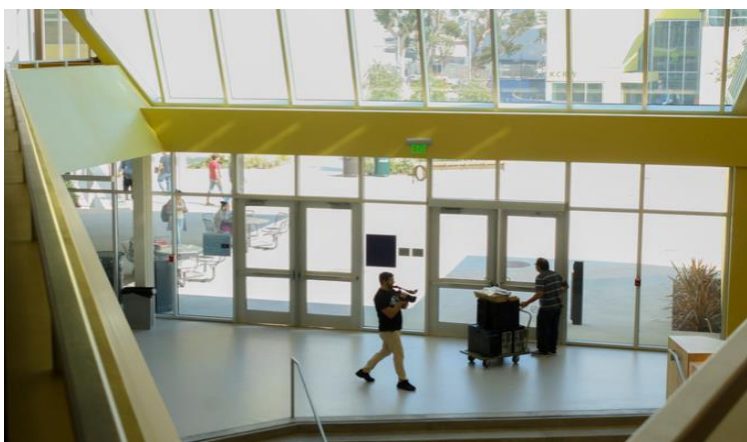


AI technology ensures thermographic cameras only detect temperature of human skin-surface in order to reduce false alarms caused by other heat sources.

Compensation algorithm ensures the temperature is compensated with ambient temperature and the distance of the measured target for better accuracy.

Thermal imaging technology is widely applied in temperature screening scenarios as it offers great flexibility and efficiency in preliminary screening of elevated skin-surface temperatures.

Application Scenarios



Note1: Indoor installation is recommended for better temperature accuracy (without wind).

Note2: Hikvision's temperature screening thermographic cameras are designed for the detection of skin-surface temperatures so as to achieve rapid preliminary screening in public areas. Actual core body temperatures should be further confirmed using clinical measurement devices. Under any circumstances, it is highly recommended to use Hikvision's thermographic cameras in accordance with local laws and regulations.